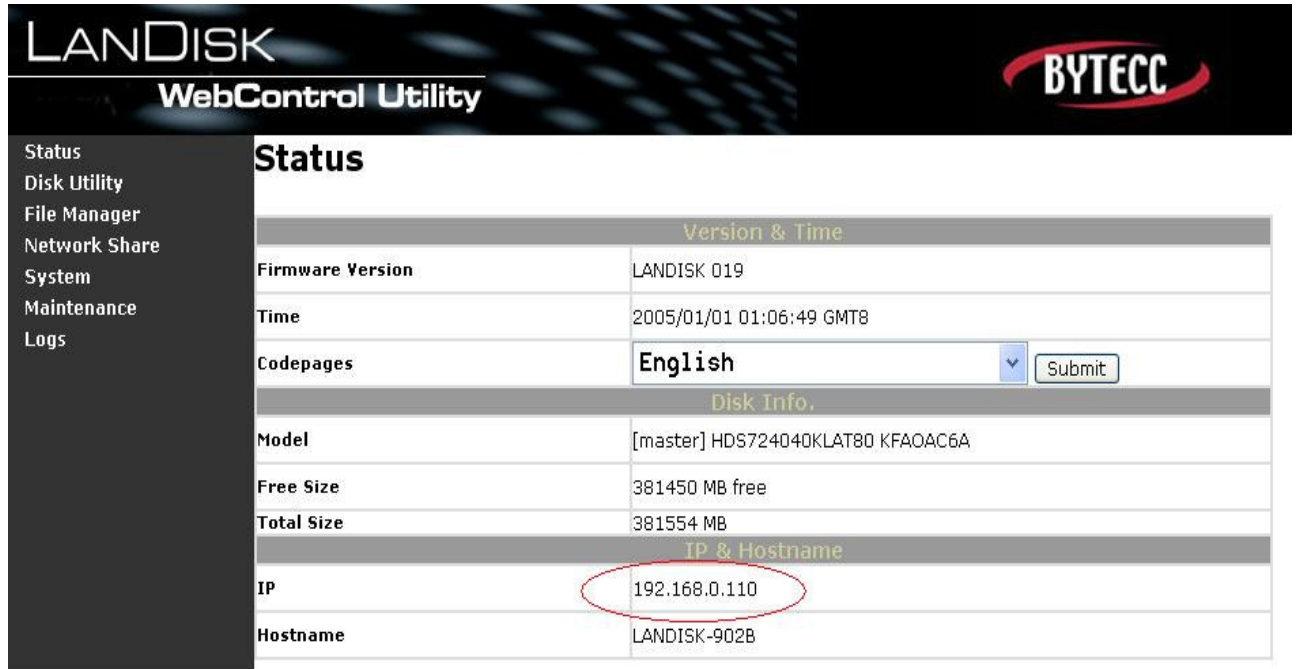


LanDisk (ME-850) FTP Server Remote Accessing through Internet

You need to setup both the LanDisk and router

1. LanDisk Setup

1.1. Find out the LanDisk IP and save it for router setup.



The screenshot shows the LanDisk WebControl Utility interface. The top header includes the 'LANDISK' logo and 'WebControl Utility' text, along with the 'BYTECC' logo. A left sidebar contains navigation links: Status, Disk Utility, File Manager, Network Share, System, Maintenance, and Logs. The main content area is titled 'Status' and is divided into three sections: 'Version & Time', 'Disk Info.', and 'IP & Hostname'. The 'IP & Hostname' section shows the IP address '192.168.0.110' circled in red.

Version & Time	
Firmware Version	LANDISK 019
Time	2005/01/01 01:06:49 GMT8
Codepages	English <input type="button" value="Submit"/>

Disk Info.	
Model	[master] HDS724040KLAT80 KFAOAC6A
Free Size	381450 MB free
Total Size	381554 MB

IP & Hostname	
IP	192.168.0.110
Hostname	LANDISK-902B

1.2. Configure FTP sever

[Network Share](#) → [FTP](#)

[FTP Configuration](#)

[FTP Status](#)

Enable: activate FTP server

Port: **21** if no other application occupies port 21, otherwise uses port > 1025.

Click "**Apply**"

Allow anonymous?

Enable: if this FTP allows anyone to login

Disable: only authorized users can login to this FTP server

Read only: user can only download files from FTP server

Read/Write: user can download/upload files

Home Directory: directory that will be treated as "/" directory when FTP in
PUBLIC default directory for accessing in LanDisk

Click “[XXXXX](#)” any folder that was created under “File Manager”
Click “Apply”

1.2.1 Allow anonymous users

The screenshot shows a web interface for configuring FTP services. At the top, there are two tabs: "SMB" and "FTP". The "FTP" tab is selected. Below the tabs is the "FTP Configuration" section, which is divided into two main areas. The first area is for "FTP Status", with a dropdown menu set to "Enable" and a "Port" field containing "21". A note next to the port field says "(21 or large than 1025)". There is an "Apply" button to the right. The second area is for "Allow anonymous?", with radio buttons for "Enable" (selected), "Disable", "Read only", and "Read / Write". There is also an "Apply" button to the right. Below this is a "Home Directory" field with a dropdown menu set to "PUBLIC".

Below the configuration section is the "FTP Account List" section. It has three buttons: "add/modify", "En/Disable", and "del". Below these buttons is a table with the following headers: "[User Name]", "[Password]", "[Access]", and "[En/Disable]". The table body is currently empty.

1.2.2 Allow only authorized users

Add User:

[Network Share](#) → [FTP](#) → [FTP Account List](#) → “add/modify”

Add/Modify FTP Account

Account

Password

Access Read only
 Read/Write

Allowed share

video

Folder list

PUBLIC
document
video

Account input user id
Password input user password
Access decide user's access right

Click "Add/Modify" after user information input.

Then **Folder list** will be able to **Add** to or **Delete** from **Allowed share** list.
Add folders you allow this user to access.
Click "Back to account list" when you are done with this user

SMB

FTP

FTP Configuration

FTP Status	<input checked="" type="radio"/> Enable <input type="radio"/> Disable Port: <input type="text" value="21"/> (21 or large than 1025)	<input type="button" value="Apply"/>
Allow anonymous?	<input type="radio"/> Enable <input checked="" type="radio"/> Disable <input type="radio"/> Read only <input checked="" type="radio"/> Read / Write	<input type="button" value="Apply"/>
	Home Directory: <input type="text" value="PUBLIC"/>	

FTP Account List

[User Name]	[Password]	[Access]	[En/Disable]
leon	*****	RW	ENABLE
jimmy	*****	RO	ENABLE

2. Router setup

In order to transfer data through the firewall of the router, you need to let the router know where to forward data.

The following is an example for Linksys router. Other routers might have different ways to call it, like Virtual Server.

Please refer to their own manuals for how to setup those routers.

LINKSYS®
A Division of Cisco Systems, Inc. Firmware Version: v2.07.1

Wireless-G Broadband Router with SpeedBooster **WRT54GS**

Applications & Gaming | Setup | Wireless | Security | Access Restrictions | **Applications & Gaming** | Administration | Status

Port Range Forward | DMZ

Port Range Forward

Port Range						
Application	Start	End	Protocol	IP Address		Enable
FTP	21	to 21	TCP	192.168.0.	110	<input checked="" type="checkbox"/>
	0	to 0	Both	192.168.0.	0	<input type="checkbox"/>
	0	to 0	Both	192.168.0.	0	<input type="checkbox"/>
	0	to 0	Both	192.168.0.	0	<input type="checkbox"/>

Port Range Forwarding:
Certain applications may require to open specific ports in order for it to function correctly. Examples of these applications include servers and certain online games. When a request for a certain port comes in from the Internet, the router will route the data to

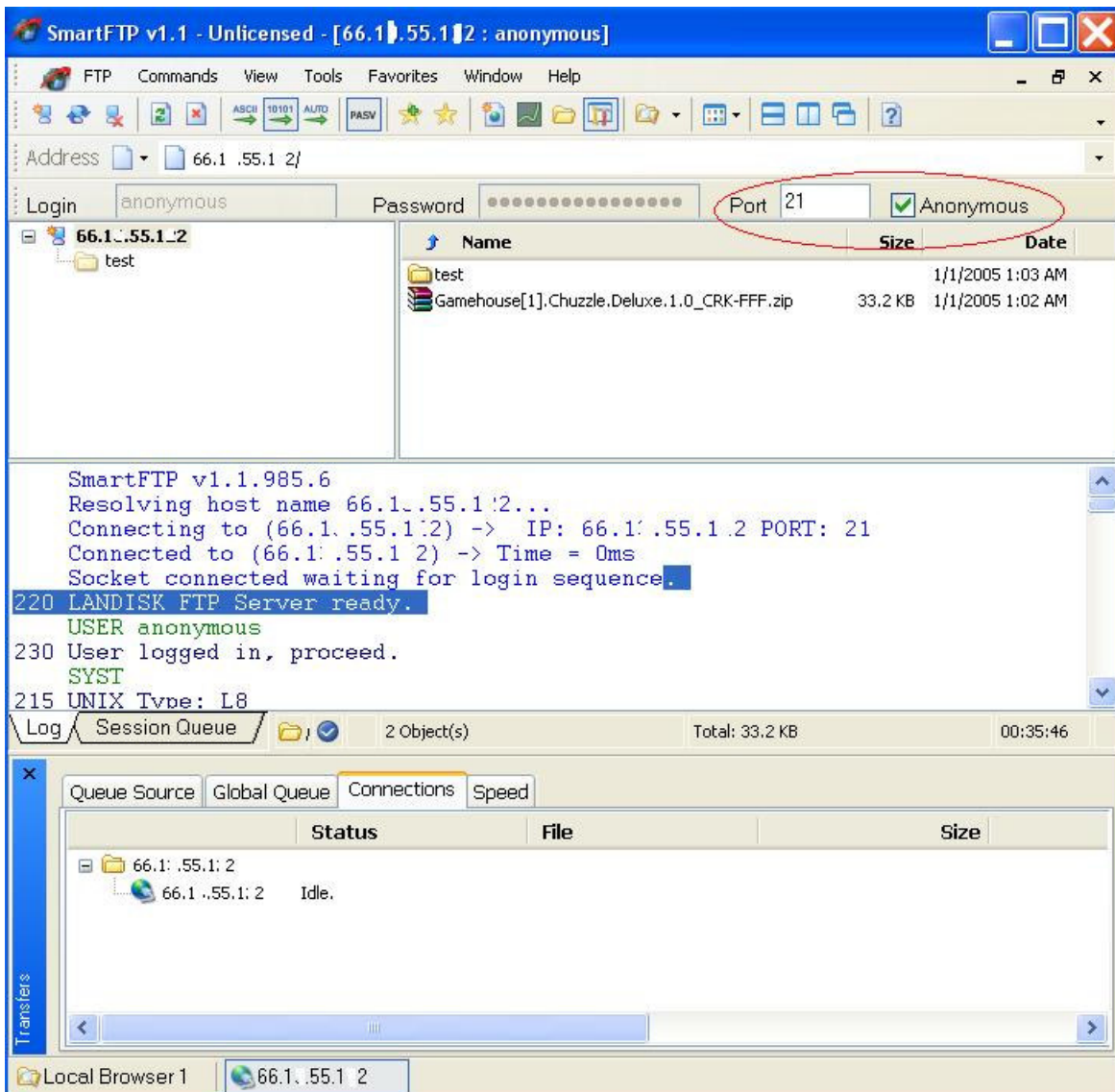
- Application** name of the application
- Start** put the same port you choose for LanDisk
- End** put the same port you choose for LanDisk
- Protocol** put TCP
- IP Address** put the same IP as the LanDisk has
- Enable** select it

You also need the real IP of your network, not the DHCP assigned IP. You can find it by checking router's status.

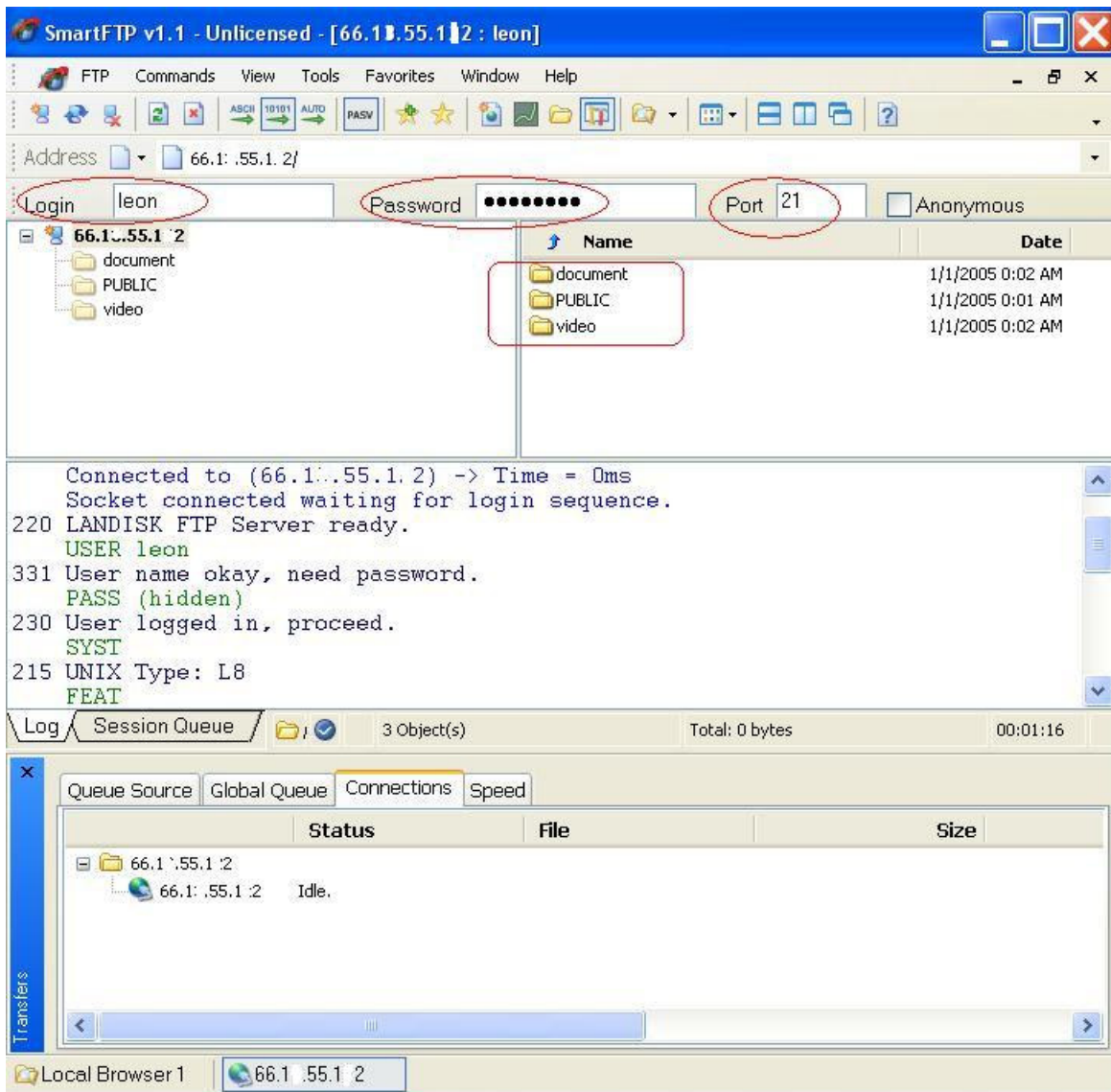
3. FTP Client Setup

You can now using FTP software to access FTP server through the Internet

Using anonymous login



Using authorized user account login



Remember, the address is the real IP of your network and Port settings have to be the same as those of LanDisk.