

Assembly Instructions for Flat Panel Wall Mount

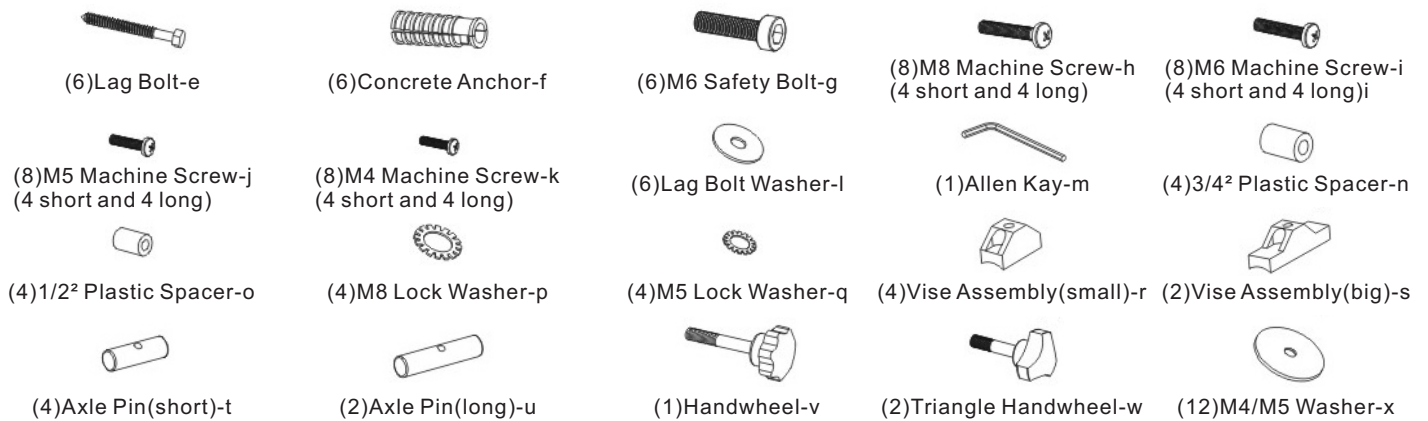
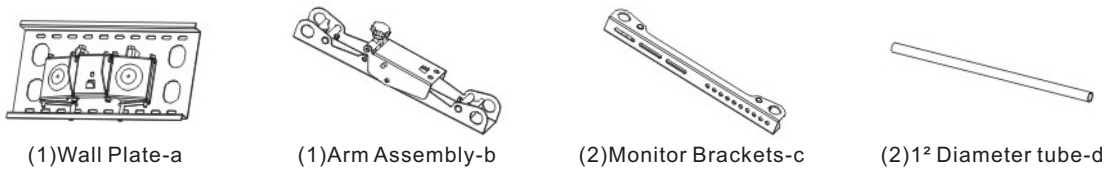
Thank you for choosing our flat panel wall mount. This product is designed to mount flat panel televisions to a vertical wall. It allows you to tilt and swivel your new television without the use of tools

Safety Warning: If you do not understand these directions, or have any doubts about the safety of the installation, please call a qualified contractor. Check carefully to make sure there are no missing or defective parts. Never use defective parts. Improper installation may cause damage or serious injury. Do not use this product for any purpose that is not explicitly specified in this manual. We can not be liable for damage or injury caused by incorrect mounting, incorrect assembly, or incorrect use.

Note: The supplied wall mounting hardware is not for steel stud walls or old cinder block walls. If you are uncertain about the nature of your wall, consult an installation contractor. We makes every effort to assure all necessary television mounting hardware is included. If the hardware you need is not included please consult your local hardware store.

Required Tools: 3/16" drill bit, 1/2" Masonry Bit for brick concrete or concrete block installations, wrench or socket set, Phillips screw driver.

Supplied Parts:



Select the television mounting hardware: Locate the threaded inserts on the back of your flat panel television. Determine which of the provided bolts is the correct diameter. Always make sure the television is unplugged before threading any bolt into the back panel. Two lengths in each of the following diameter are provided: M4, M5, M6 and M8. The shorter bolts are to be used if the back your television is flat. The longer bolts are designed to be used with either the M4/M5 Spacer(o) or the M6/M8 Spacer(n) on televisions with curved or recessed backs. The long bolts are only to be used without a spacer in rare cases when the threaded inserts are deeply recessed inside the frame of the television.

WARNING: Threaded bolts carefully into your television by hand before tightening. If feel resistance, remove the bolt immediately! If you are unable to find appropriate hardware for your television, consult a local hardware store.

Mounting the wall plate: Wood stud, Brick, Solid Concrete, and Concrete Block mounting options provided.

Wood stud mounting: The Wall Plate (a) must be mounted to two wood studs at least 12" apart. Use a high quality stud sensor to locate two adjacent studs. It is a good idea to verify where the studs are located with an awl or thin nail shown in diagram 1-A. Pre drill a 2.5" deep hole at desired height in each stud using a 3/16" drill bit. Make sure these holes are in the centre area of the studs and level with each other. Use the Wall Plate as a template to mark the location of the second hole in each stud. Drill 2.5" deep holes using the 3/16" drill bit in the marked location.

Attach the Wall Plate to the wall using four Lag Bolts (e) and four Lag Bolts Washers (d). Make sure that the Wall Plate is oriented so the flat surface in the centre of the plate is against the wall and the set of Lag Bolts in on each side of the two large holes in the centre as shown in Diagram 1-B.

WARNING: Tighten Lag Bolts (e) only until Lag Bolt Washer (d) is pulled firmly against the Wall Plate(a). DO NOT OVER TIGHTEN THE BOLTS!

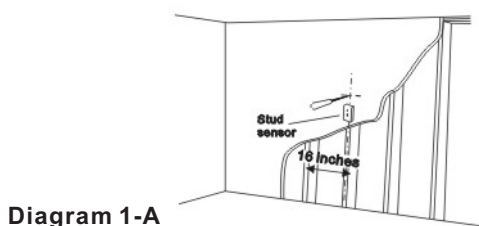


Diagram 1-A

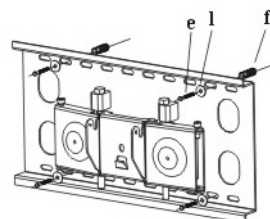


Diagram 1-B

As shown in Diagram 2, have two 1² diameter Tube-d through Arm Assembly-b and monitor brackets-c in turn, pay attention to getting the section of TV Rail with Slot upward and the one with a round hole downward. Then according to Diagram 3-A, place Vise Assembly(small)(r) into TV Rail(c), have Axle pin(short) through the round hole on monitor brackets and fit the arc face tightly against 1² Diameter Tube(d), then as shown in Diagram 3-B, have M6 safety Bolt(g) through Axle pin(t) and screw in Vise Assembly(small) and, with the same ways, mount Vise Assembly(big) and Axle pin(long) into Arm Assembly(b). The effect at the end of installation is shown in Diagram 3-C. Attention: do not tighten the screw first at this time so as to let monitor brackets smoothly slide on 1² Diameter Tube-d.

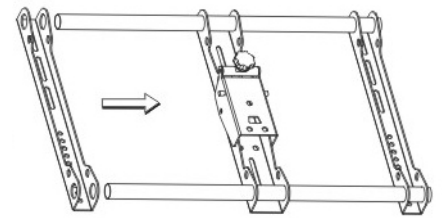


Diagram 2

WARNING: The 1² diameter tubes must extend beyond the outside edges of both monitor brackets and the Allen bolt in all 6 vise assemblies must be tightened for the installation to be safe!

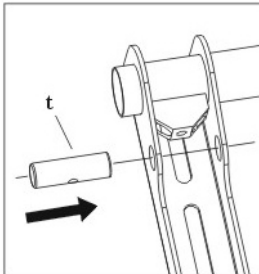


Diagram 3-A

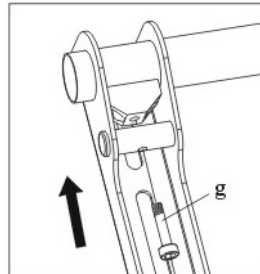


Diagram 3-B

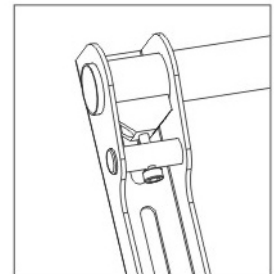


Diagram 3-C

Attach the Monitor Brackets to the television: Diagram 4 shows the orientation of the monitor brackets on the back of the television. Each Monitor Bracket(c) must be held in place by 2 bolts. The half of the monitor bracket with the pattern of 8 holes is the bottom, and the slot is on the top. Make sure both monitor brackets are level with each other by selecting the same hole in the bottom half of each bracket. If you determined that your television requires either the M4(k) or M5(j) diameter look at the diagrams 5 through 7 and select the one the best represents the shape of your television. If you determined that your television requires either the M6(i) or M8(h) diameter bolts, look at diagrams 8 through 10 and select the one that best represents the shape of the back of your television.

WARNING: DO NOT LAY THE TELEVISION FACE DOWN ON THE GLASS, lean it up against a wall or other solid surface. Lying the television down on the glass may cause permanent damage.

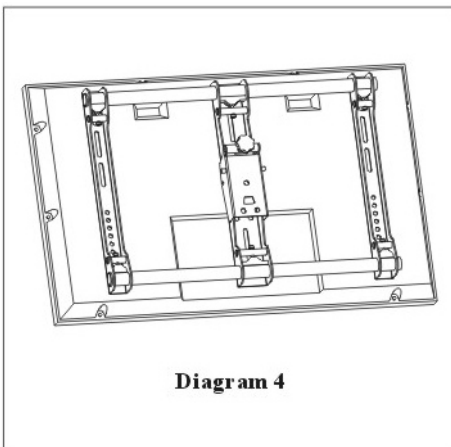


Diagram 4

Diagram 5-7

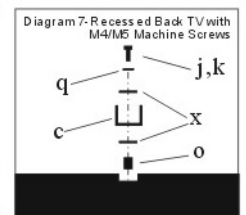
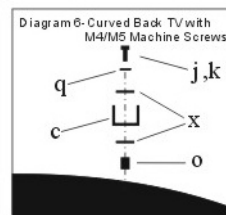
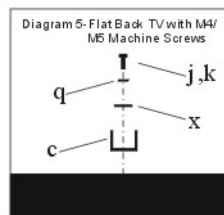
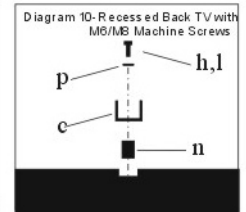
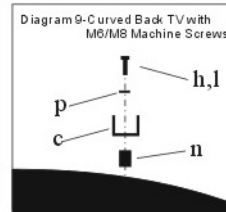
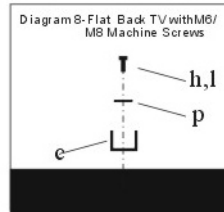


Diagram 8-10



Hardware assembly photos are shown looking down onto the top of TV

Hang the assembly onto the Wall Plate: after Monitor Brackets is mounted on the TV, lift the TV with its back to the wall plate and hang it on the wall plate as shown in Diagram 11, for the big TVs two persons may required to do this. After the TV is made surely hung on the wall plate securely, screw handwheel into the screw hole on the wall plate according to Diagram 12 to get both Arm assembly and wall plate jointed together.

Leveling the monitor: Once the television is mounted onto the wall plate(a), and the handwheel(v) is tight, it can be adjusted to level. Slightly loosen the two Triangle Handwheel-w on the back of the arm assembly(b) shown in of diagram 13. Once those two bolts are free, the television can be adjusted $\pm 5^\circ$ until level. When the television is level re-tighten the two Triangle Handwheel-

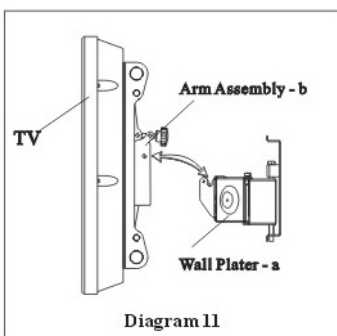


Diagram 11

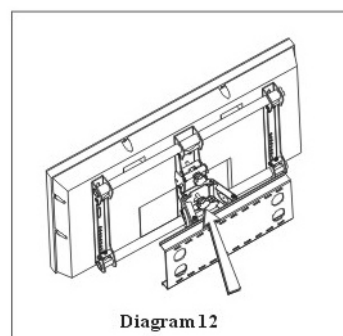


Diagram 12

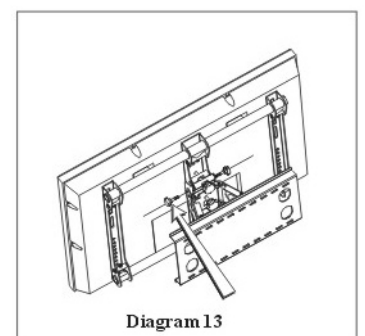


Diagram 13